



SMEX02 European Remote Sensing Satellite (ERS-2) AMI Data, Iowa, Version 1

USER GUIDE

How to Cite These Data

As a condition of using these data, you must include a citation:

Jackson, T. and R. Van der Velde. 2004. *SMEX02 European Remote Sensing Satellite (ERS-2) AMI Data, Iowa, Version 1*. [Indicate subset used]. Boulder, Colorado USA. NASA National Snow and Ice Data Center Distributed Active Archive Center. <https://doi.org/10.5067/PBP6FXMGFF7B>. [Date Accessed].

FOR QUESTIONS ABOUT THESE DATA, CONTACT NSIDC@NSIDC.ORG

FOR CURRENT INFORMATION, VISIT <https://nsidc.org/data/NSIDC-0198>



National Snow and Ice Data Center

TABLE OF CONTENTS

1	DETAILED DATA DESCRIPTION.....	2
1.1	Format	2
1.2	File Naming Convention.....	2
1.3	Spatial Coverage.....	2
1.3.1	Spatial Resolution.....	2
1.4	Temporal Coverage.....	2
1.5	Parameter or Variable.....	2
1.5.1	Sample Data Record	3
2	DATA ACQUISITION AND PROCESSING.....	3
2.1	Sensor or Instrument Description	3
3	REFERENCES AND RELATED PUBLICATIONS	3
4	CONTACTS AND ACKNOWLEDGMENTS	3
5	DOCUMENT INFORMATION	4
5.1	Publication Date	4
5.2	Date Last Updated.....	4

1 DETAILED DATA DESCRIPTION

1.1 Format

Data are JPEG format image files.

1.2 File Naming Convention

The image files use the convention: ERSdaacmddy.jpg. For example, the file acquired on 7 July 2002 is "ERSdaac070502.jpg."

1.3 Spatial Coverage

Southernmost Latitude: 41.308° N

Northernmost Latitude: 42.389° N

Westernmost Longitude: -93.913° W

Easternmost Longitude: -93.017° W

The spatial coverage of each scene is shown in Table 1.

Table 1. Coverage of the ERS-2 AMI scenes

date	latitude	longitude	latitude	longitude
31 May	42.216°N	93.963°W	41.179°N	93.063°W
5 July	42.389°N	93.913°W	41.308°N	93.017°W
13 Sept	42.372°N	93.935°W	41.294°N	93.041°W

1.3.1 Spatial Resolution

Pixel spacing is 12.5 m.

1.4 Temporal Coverage

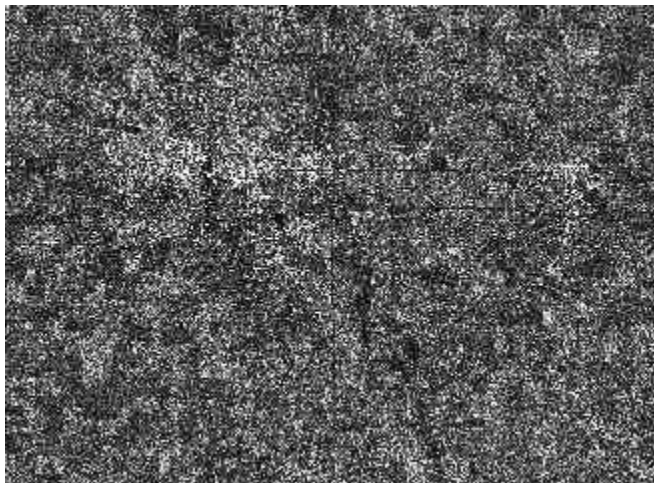
Data were gathered on 31 May, 5 July, and 13 September 2002.

1.5 Parameter or Variable

C-band radar backscatter browse images.

1.5.1 Sample Data Record

The following is a small sample of the image file "ERSdaac070502.jpg."



2 DATA ACQUISITION AND PROCESSING

2.1 Sensor or Instrument Description

The C-band Active Microwave Instrument (AMI) onboard the ERS-2 space platform provides backscatter measurements around incidence angles of 23° and at VV polarization.

3 REFERENCES AND RELATED PUBLICATIONS

Please see the [SMEX02](#) site for more information, and the [AMSR-E](#) site to access data.

ERS Active Microwave

AMI Instrument Description

[European Remote Sensing Satellite-2](#)

4 CONTACTS AND ACKNOWLEDGMENTS

Thomas Jackson, Rogier Van der Velde

U.S. Department of Agriculture (USDA) Agriculture Research Service (ARS) National Soil Tilth Laboratory

5 DOCUMENT INFORMATION

5.1 Publication Date

June 2004

5.2 Date Last Updated

16 April 2021