



SCICEX Phase 2



Topics

- **SCICEX Phase 2 history**
- **Recent SCICEX operations**





SCICEX Phase 2

1999

**SAC Concept Developed
Announced at SCICEX 2000
MOA Drafted**

2000

MOA Signed

2000 - 2005

Four Accommodation Cruises

- **L MENDEL RIVERS (2000)**
- **SCRANTON (2001)**
- **HONOLULU (2003)**
- **SALT LAKE CITY (2005)**



Early SAC

- **Membership**

- Garry Brass (Chair)
- Codispoti, JRM, Whitley, DeLaca, Muench, Smethie
- ONR (Conlon), NSF (Dionne), ASL (Gossett)

- **Meetings**

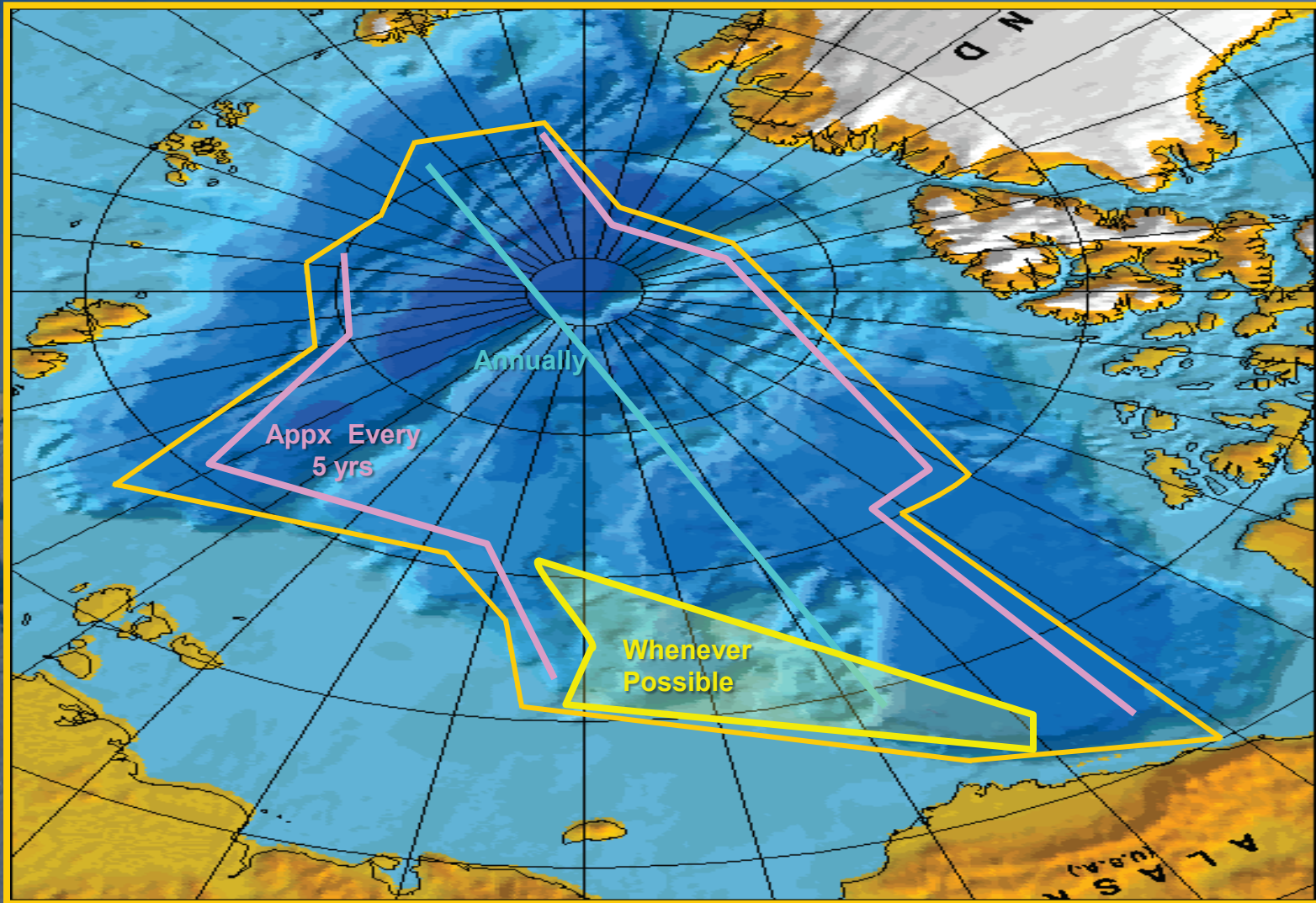
- Roughly 1 / year through 2005
- Many were AGU Town Hall Meetings

- **Science guidance verbal, not written**

- Repeat center - basin transect
- Periodic basin - margin transect
- Initially asked to support SBI



Early SAC Guidance





Early IAC

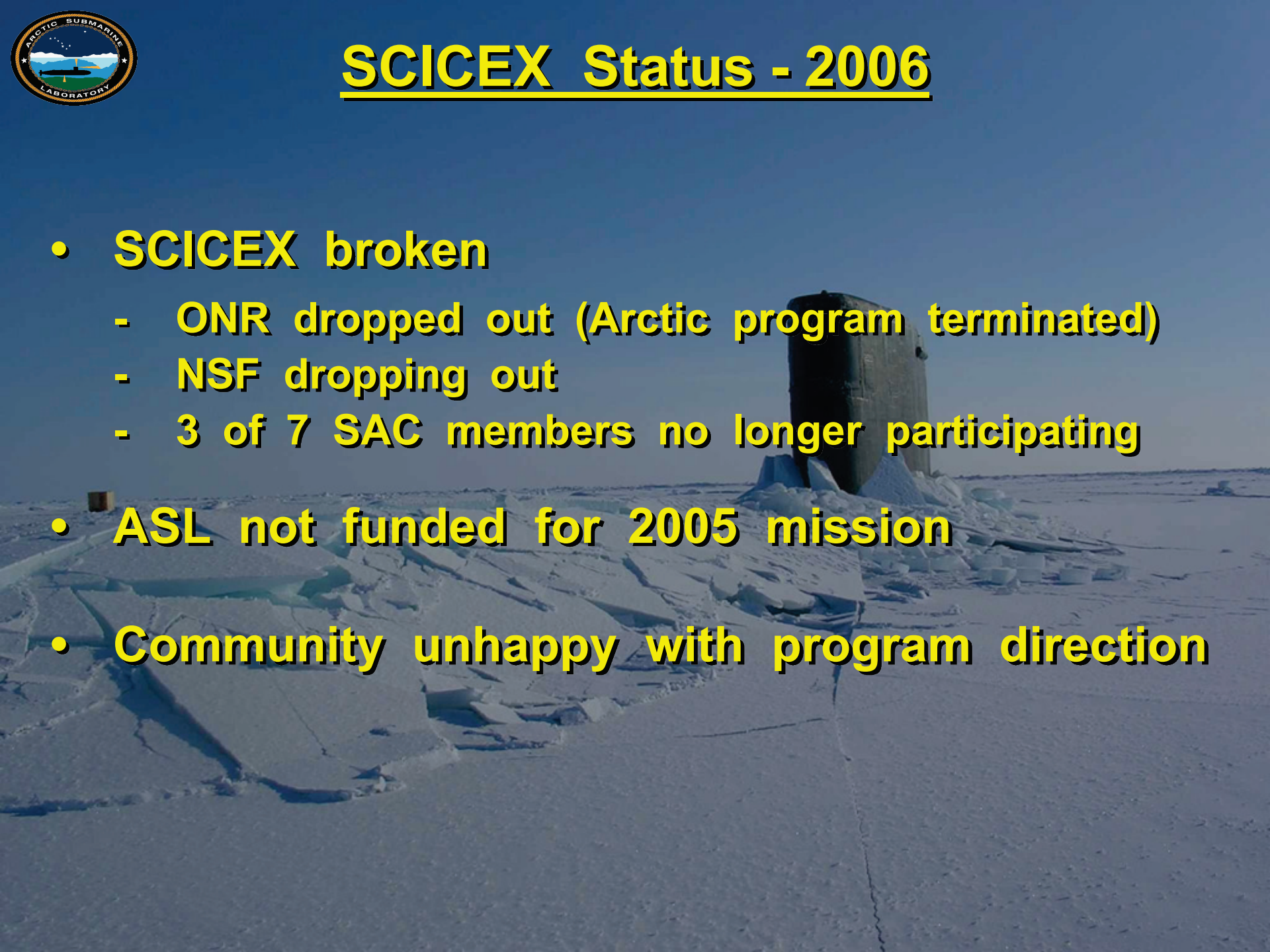
- **No meetings**
- **ASL & ONR agreed on best opportunities**
- **ONR funded for 2000 / 2001 / 2003**
- **NSF funded for 2005 (in 2007)**





SCICEX Status - 2006

- **SCICEX broken**
 - **ONR dropped out (Arctic program terminated)**
 - **NSF dropping out**
 - **3 of 7 SAC members no longer participating**
- **ASL not funded for 2005 mission**
- **Community unhappy with program direction**





First IAC Meeting - Apr 07

- **Reinvigorated agency interest**
 - **ONR would provide leadership (but no \$)**
 - **NSF would fund**
- **New SAC to be named (first met Dec 07)**
- **Science Plan**
 - **Primary goal of new SAC**
 - **SCICEX would resume once issued**
- **First suggestion that all cruises be used as SAMs**



SCICEX Hiatus

2005 to 2007

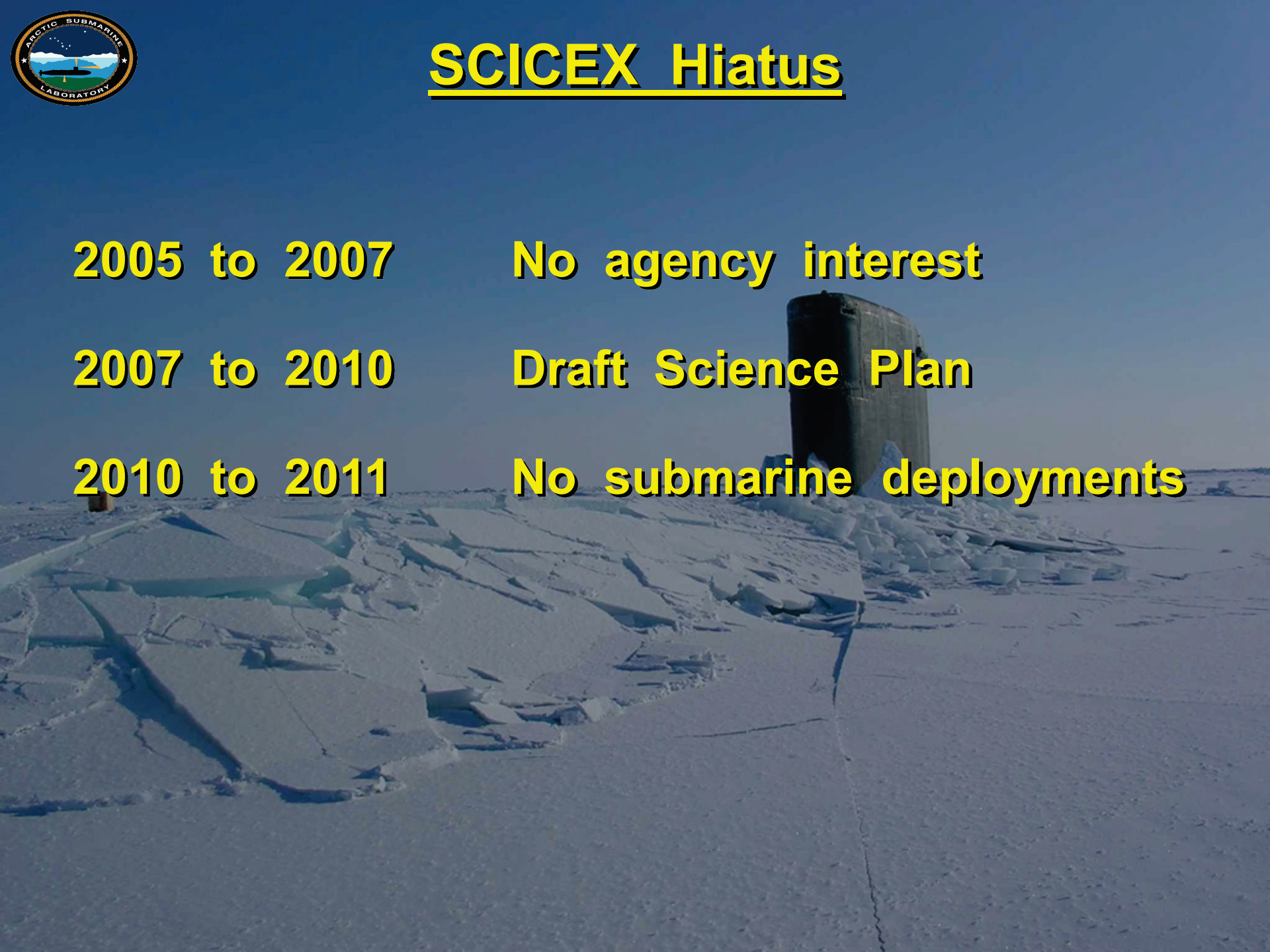
No agency interest

2007 to 2010

Draft Science Plan

2010 to 2011

No submarine deployments





Post Science Plan Missions (Details to Follow)

- **2011 (ICEX 1 - 11)**
 - **USS NEW HAMPSHIRE**
 - **USS CONNECTICUT**
- **2012 USS TOPEKA Transit**
- **Intend to use all transits of Arctic Basin for SCICEX**





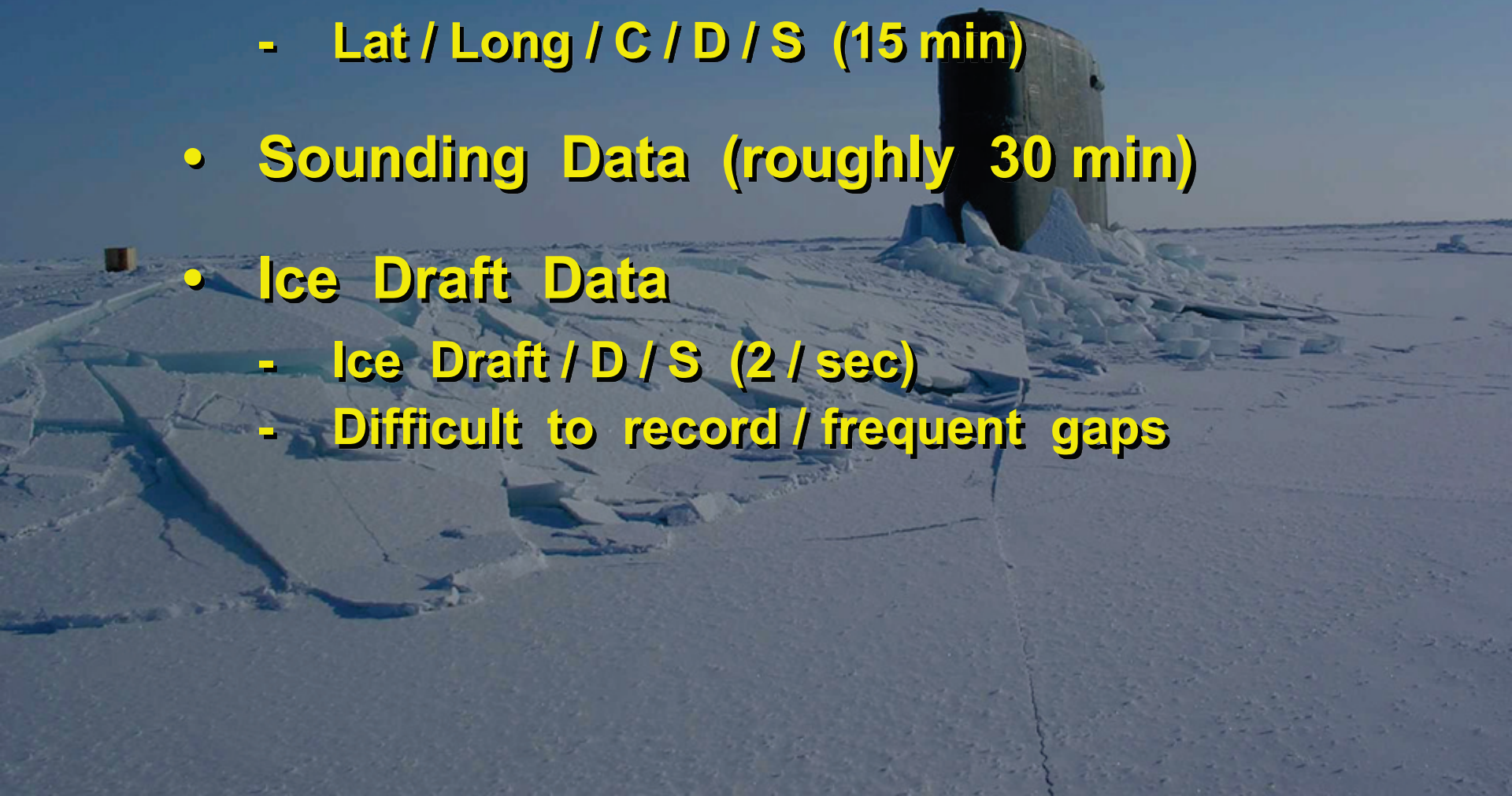
NHP Data Collection

- **RLGN**
 - Lat / Long / C / D / S (1 / min)
 - Sounding (every 30 min)
- **Sonar Logger (SLOGGER)**
 - Lat / Long / C / D / S (1 / sec)
 - Ice Draft (2 / sec)
- **DARTS**
 - Lat / Long / Sounding / Ice Draft (10 sec)



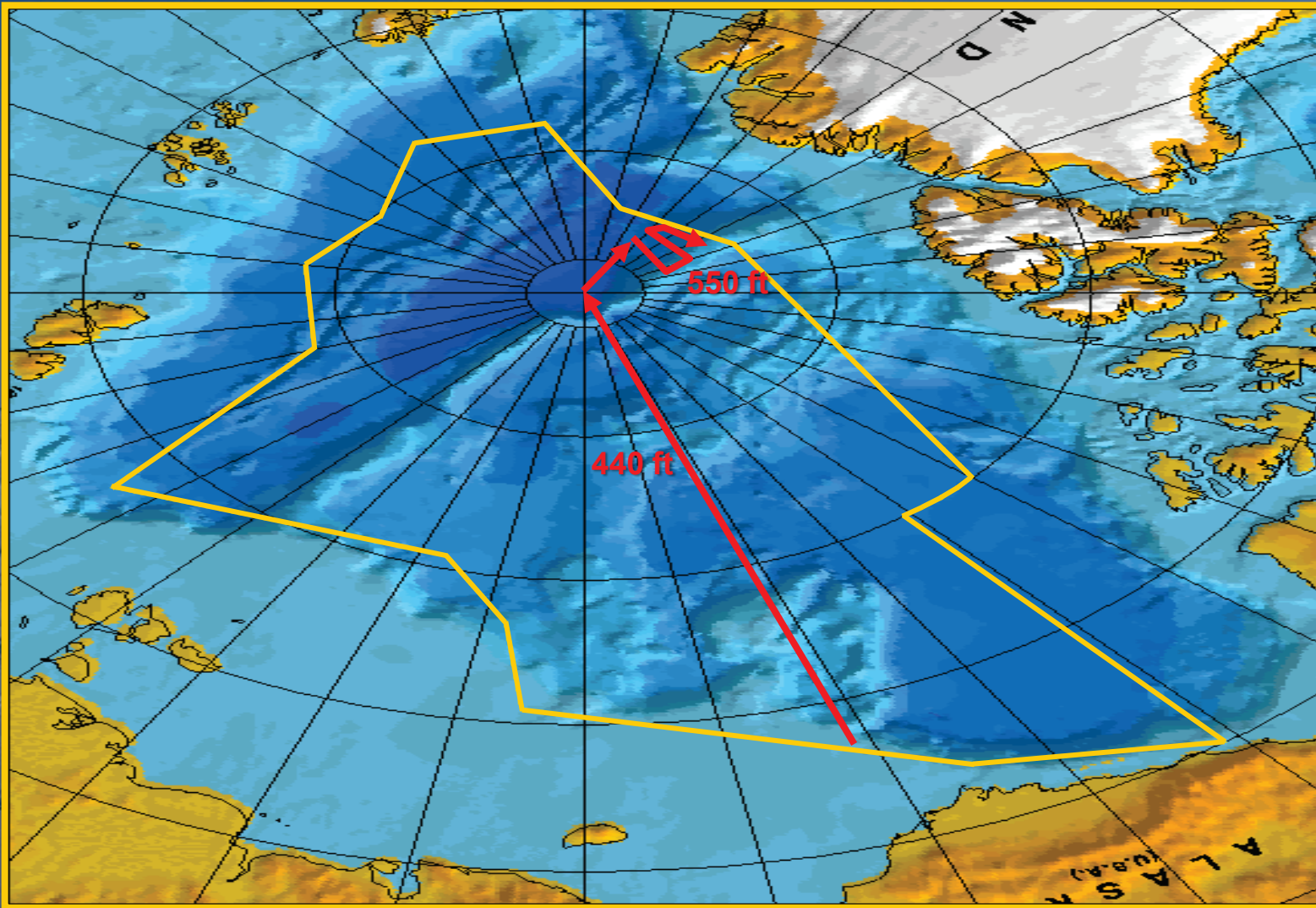
CON Data Collection

- **RLGN**
 - **Lat / Long / C / D / S (15 min)**
- **Sounding Data (roughly 30 min)**
- **Ice Draft Data**
 - **Ice Draft / D / S (2 / sec)**
 - **Difficult to record / frequent gaps**





TOPEKA Transit



- Transit
57.5 hrs
- Survey
24 hrs



TOP Data Collection

- **RLGN**
 - **Lat / Long / C / D / S / Pitch / Roll (1 / min)**
- **SLOGGER Data not available**
- **Sonar tapes**
 - **Initially unreadable**
 - **Topsounder data when shallow (2/sec)**
 - **Bottomsounder data (10 sec)**
- **Released 23 May 13**