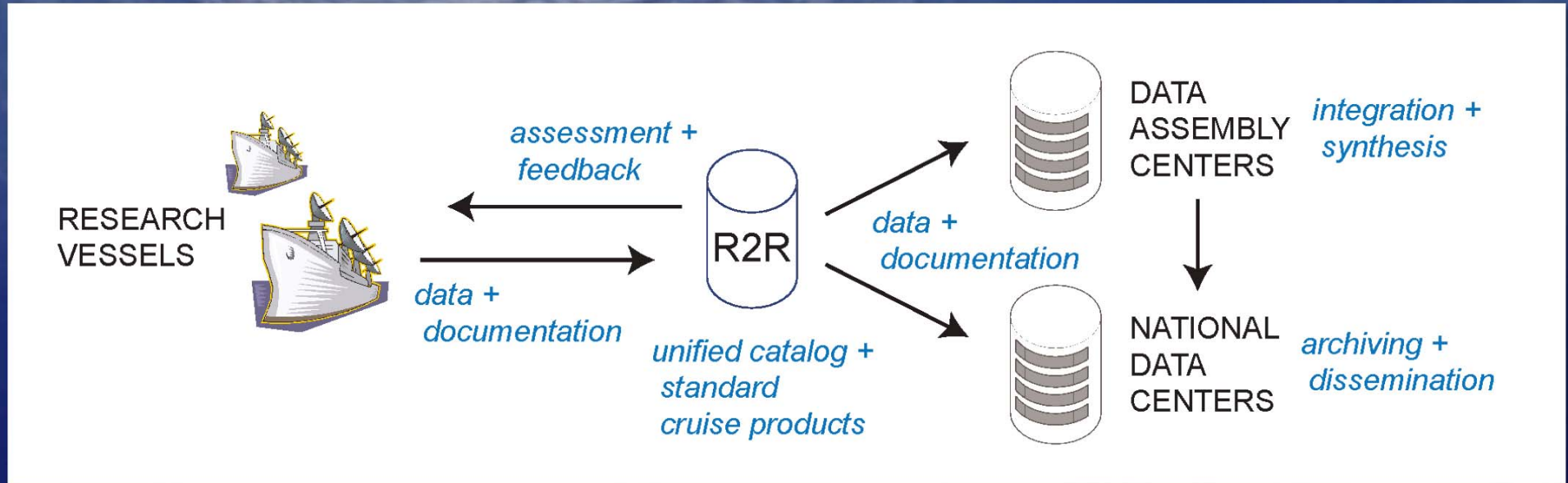




# Rolling Deck to Repository (R2R)



- Migrate all routine “underway” data to long-term repositories
- Create catalog of cruises and standard products
- Assess data quality and provide timely feedback to operators

# Fleet Online

Oct. 2008

*Langseth  
(Healy)  
Kilo Moana  
Melville  
Revelle*

2009

*Thompson  
Sharp  
Atlantis  
Knorr  
Oceanus  
(Ka'imikai)  
Barnes*

2010

*Walton Smith  
Point Sur  
Wecoma  
(Cramer)  
(Seamans)  
Endeavor  
New Horizon  
Sproul  
(Polar Sea)  
Pelican  
Savannah  
Explorer  
Hatteras  
Blue Heron*



Oct. 2010







Joined R2R

- 26 RVs  
(21 UNOLS  
+5 allied)

- 2,056  
cruises  
cataloged

- 7+ million  
files  
archived

## Cruise Catalog

 <i>Alpha Helix</i> ★	 <i>Atlantic Explorer</i> ★	 <i>Atlantis</i> ★	 <i>Blue Heron</i> ★
 <i>Cape Hatteras</i> ★	 <i>Clifford A. Barnes</i> ★	 <i>Corwith Cramer</i> ★	 <i>Endeavor</i> ★
 <i>F.G. Walton Smith</i> ★	 <i>Healy</i> ★	 <i>Hugh R. Sharp</i> ★	 <i>Ka'imikai-o-Kanaloa</i> ★
 <i>Kilo Moana</i> ★	 <i>Knorr</i> ★	 <i>Laurence M. Gould</i> ★	 <i>Marcus G. Langseth</i> ★
 <i>Maurice Ewing</i> ★	 <i>Melville</i> ★	 <i>Moana Wave</i> ★	 <i>Nathaniel B. Palmer</i> ★
 <i>New Horizon</i> ★	 <i>Oceanus</i> ★	 <i>Pelican</i> ★	 <i>Point Sur</i> ★
 <i>Polar Sea</i> ★	 <i>Robert C. Seamans</i> ★	 <i>Robert Gordon Sproul</i> ★	 <i>Roger Revelle</i> ★
 <i>Savannah</i> ★	 <i>Seward Johnson</i>	 <i>Thomas G. Thompson</i> ★	 <i>Wecoma</i> ★

# NOAA Archives

## Cruise Catalog: KM0812



Operator: University of Hawaii  
Vessel: Kilo Moana

Cruise ID	Start Date	Start Port	End Date	End Port
KM0812	2008-07-01	Honolulu	2008-07-22	Honolulu
<b>Details</b>				
Inventory				
Project: North Pacific Subtropical Gyre (NPSG) Silica Cycling				
<b>SCIENCE PARTY</b> Brzezinski, Mark      Scientist, Chief      University of California, Santa Barbara				
<b>FILE SETS</b>				
Device Type	Make [,Model [,Location]]	Files	Repository	
adcp	RDI OS-38	List	NODC	Download
adcp	RDI WM-300	List	NODC	Download
multibeam	Kongsberg EM1002	List	NGDC	Download
multibeam	kongsberg EM120	List	NGDC	Download

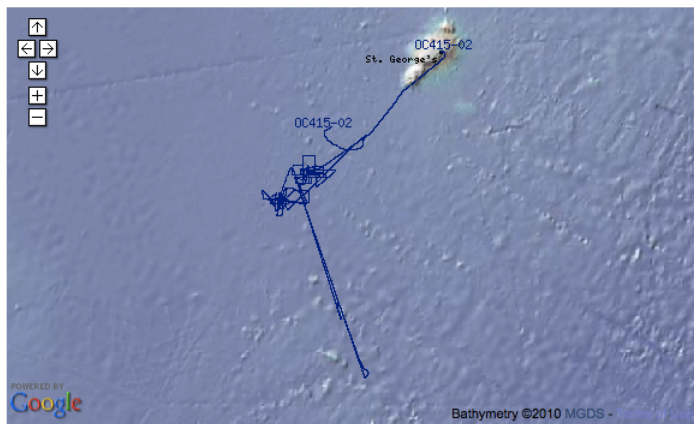
<http://www.rvdata.us/catalog/KM0812>

ADCP  
-> NODC

Multibeam  
-> NGDC

# Reciprocal Linking

## Cruise Catalog: OC415-02



Operator: Woods Hole Oceanographic Institution  
Vessel: Oceanus

Cruise ID	Start Date	Start Port	End Date	End Port
Details				
OC415-02	2005-07-18	St. George's	2005-08-04	St. George's
Inventory				
Project: Eddies Dynamics, Mixing, Export, and Species (EDDIES) (Info <a href="#">↗</a> )				
<input type="checkbox"/> SCIENCE PARTY				
Ledwell, James	Scientist, Chief	Woods Hole Oceanographic Institution		
<input type="checkbox"/> RELATED DATA				
Biological and Chemical Oceanography Data Management Office (Info <a href="#">↗</a> )				<a href="#">Data <a href="#">↗</a></a>

**BCO-DMO**  
Biological and Chemical Oceanography Data Management Office

Home Data Resources About Us Contact

Database

- Welcome
- Programs 16
- Projects 130
- Deployments 799
- Instruments 199
- Datasets 4032
- People 1039
- Affiliations 227
- Funding 34
- Parameters 1097

Data Access

- Geospatial access

Platform deployment: **OC415-02**

Platform: R/V Oceanus  
Project: Eddies Dynamics, Mixing, Export, and Species composition (EDDIES)  
Type: vessel  
Deployment: **OC415-02**  
Synonyms: OC415-2, OC415\_T1, EDDIES 2005 Tracer 1  
Coordinated deployments: None  
Start date: 7/18/2005  
End date: 8/4/2005  
Location: Sargasso Sea  
Locations table:  
List  
Deployment report: None

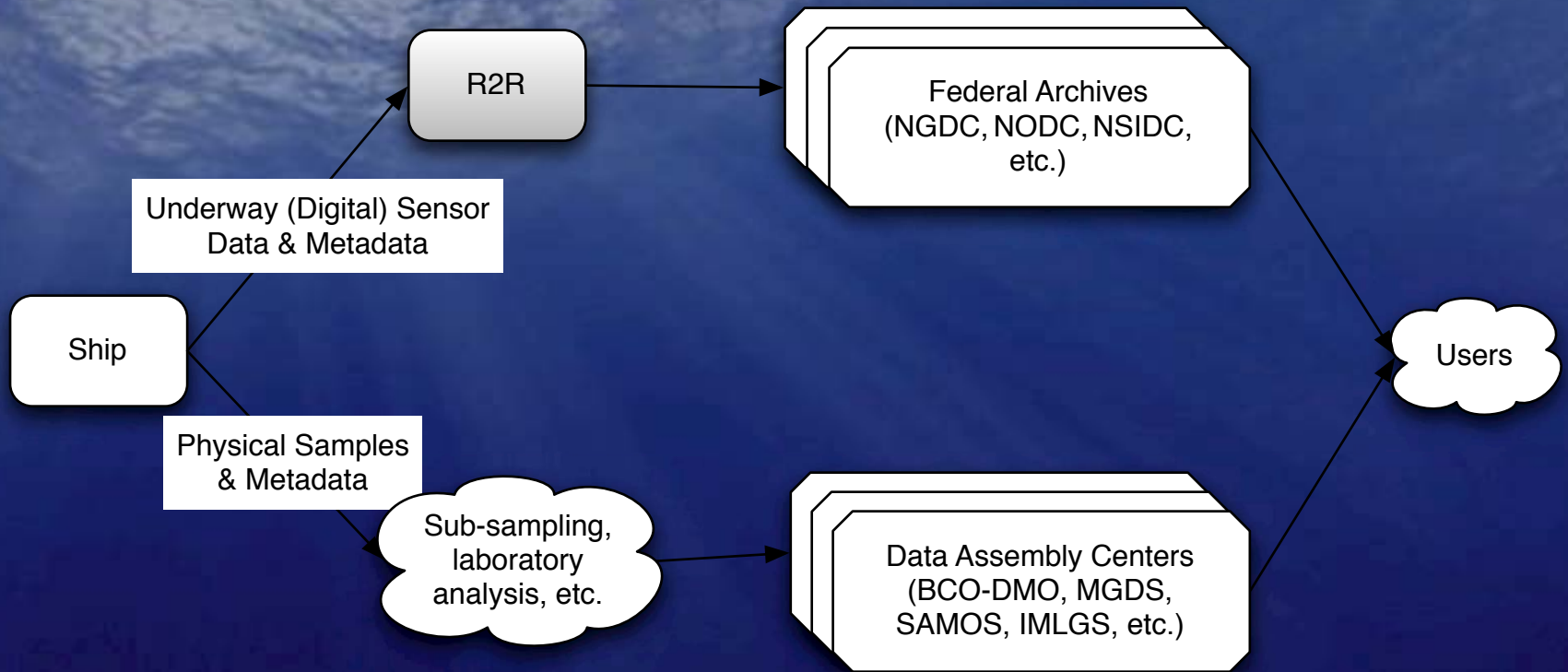
▼ Description  
EDDIES project 2005 Tracer 1 cruise  
Funded by: NSF OCE-0241310  
Original cruise data are available from the » NSF R2R data catalog

► Datasets associated with this platform deployment  
► People associated with this platform deployment

©2008 Biological and Chemical Oceanography Data Management Office.  
Funded by the U.S. National Science Foundation

Processed  
bio/chem data at  
BCO-DMO

# Standard R2R Data Flow



# SCICEX SAM/R2R Data Flow

